

TABLE OF CONTENTS

Executive summary	2
<i>Bachelor's Degree Recipients</i>	2
<i>Master's/Doctorate Degree Recipients</i>	6
Employers of 2004 BA/BS Students (All Degrees)	8
Graduate & Professional Schools to Be Attended by 2004 BA/BS Students	10
Employers of 2004 MA/MS/Ph.D. Students (All Degrees)	12
Graduate & Professional Schools to Be Attended by 2004 MA/MS Students	14
Breakdown by Academic Department (BA/BS)	15
<i>Weiss School of Natural Sciences</i>	15
<i>School of Social Sciences</i>	17
<i>George R. Brown School of Engineering</i>	20
<i>School of Architecture</i>	24
<i>Shepherd School of Music</i>	24
<i>School of Humanities</i>	25
<i>Interdepartmental Programs</i>	30
Breakdown by Academic Department (MA/MS/Ph.D.)	32
<i>Weiss School of Natural Sciences</i>	32
<i>School of Social Sciences</i>	33
<i>George R. Brown School of Engineering</i>	35
<i>School of Architecture</i>	37
<i>Shepherd School of Music</i>	37
<i>School of Humanities</i>	37
Salary Reports	39
Appendices	43

2004 POST-GRADUATE SURVEY

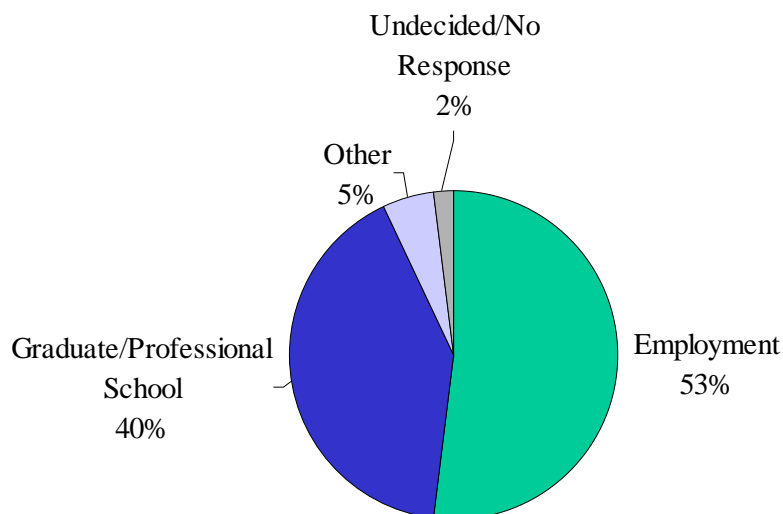
Executive Summary

This annual survey reports the employment and graduate school plans of the members of the class of 2004. A total of 943* students received degrees in May 2004. Eight hundred thirty-two (832) students graduating with bachelor's, master's, or doctorate degrees in May 2004 responded to the annual Career Services Post-Graduate Survey. A total of 589 bachelor's degree recipients and 243 graduate degree recipients responded. The survey was administered to the bachelor's degree recipients at the time they picked up their caps and gowns for the commencement ceremonies. We administered the survey to the master's and doctoral candidates when they submitted their theses and dissertations to the Vice President for graduate studies. Only students receiving terminal degrees were included in this study; students who received an automatic Master's degree while continuing participation in a doctorate program were excluded.

BACHELOR'S DEGREE RECIPIENTS

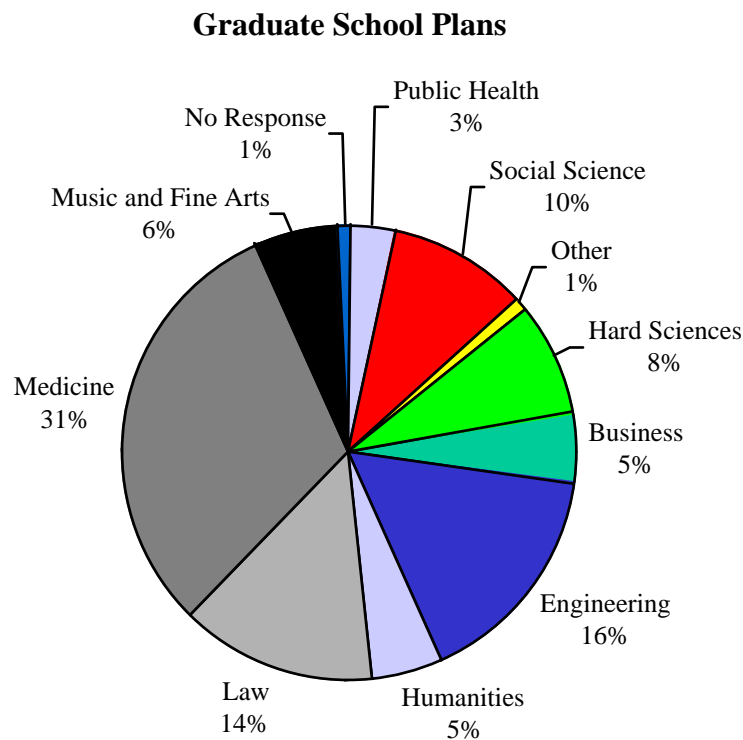
Forty percent of the respondents in the Class of 2004 reported that they would attend graduate school in the fall of 2004. In comparison, 43% of last year's graduating class chose this option. Fifty-three percent of the respondents indicated that they planned to enter the workforce immediately, compared to 49% of last year's graduating class. Five percent of the respondents indicated they would pursue other options such as a fellowship, internship, preceptorship, pre-professional school, seminary, study abroad, travel, or volunteer work. Two percent of those surveyed were undecided or did not indicate their post-graduate plans. Overall, 74% of the students graduating with bachelor's degrees actually had accepted jobs (177), been admitted to graduate or professional schools (228) or had other definite plans (29) as of graduation. This figure is consistent with other years.

BA/BS Plans



* This number excludes those students receiving a Master's in Business Administration

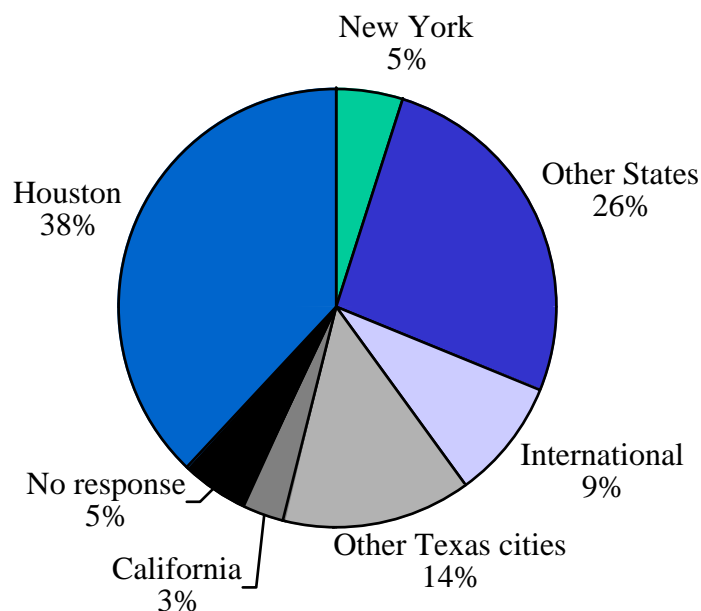
Of those students choosing to attend graduate or professional school, medical school was once again the most popular option. Thirty-one percent reported they would be attending medical school. The next most popular options were: engineering (16%); law (14%); social sciences (10%); and the hard sciences (8%). The remaining twenty percent of the respondents indicated they would attend graduate school in diverse fields including business, music, public health, the humanities and other fields. In contrast to last year, there were significant numbers of respondents (5%) who indicated they would attend business school. Also, there were no students who planned to attend graduate school in architecture. One percent of respondents did not indicate what they would study in graduate school.



Seventy-nine of the respondents who indicated they would enter the workforce immediately after graduation, also reported that they planned to attend graduate or professional school at some point in the future. This number is exactly the same as last year. Three percent indicated they would never attend graduate school and the remaining (18%) did not indicate whether or not they planned to obtain higher degrees.

Of those students who had jobs as of graduation, 38% accepted jobs in Houston and 14% accepted jobs in other Texas cities. Five percent accepted jobs in New York, three percent accepted jobs in California, and 26% accepted jobs in other states. Nine percent of students indicated they will be working in an international location, for example, as an architect intern, assistant conductor, field engineer, Peace Corps volunteer, and researcher. This international location percentage is an increase from last year's 6%.

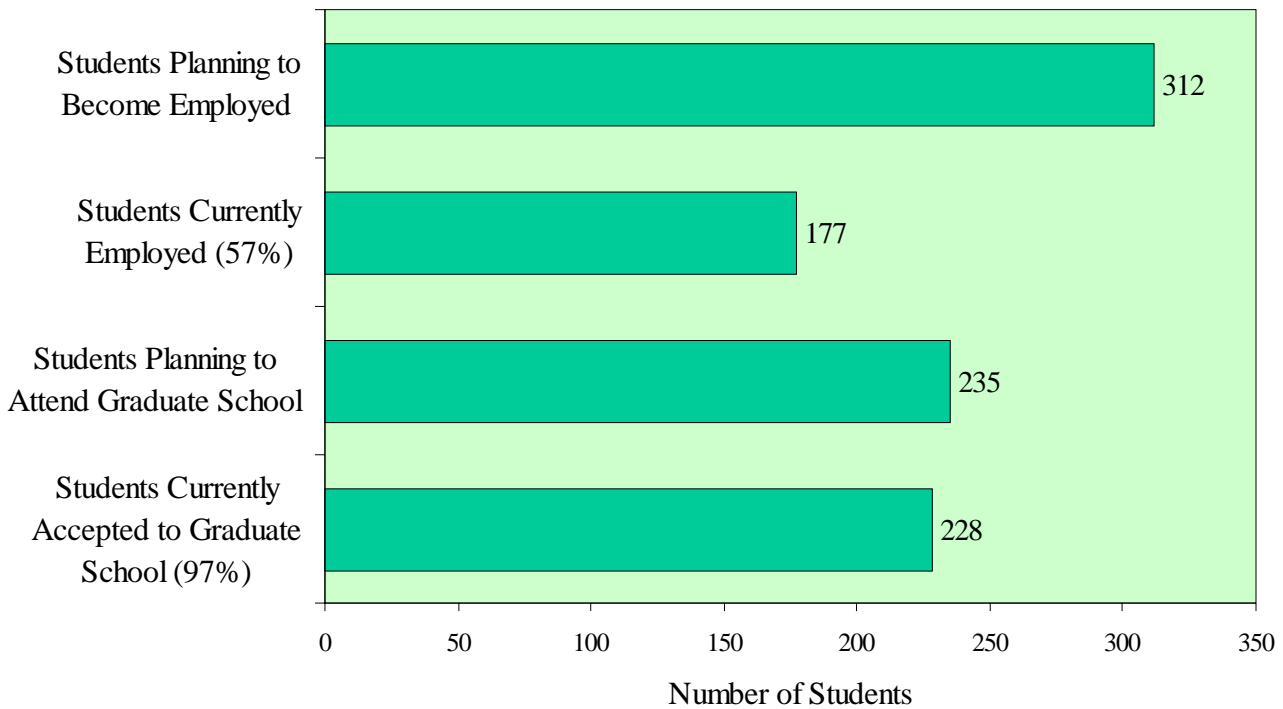
BA/BS Job Locations



The most common job titles for members of the Class of 2004 receiving Bachelor's degrees, included analyst, consultant, engineer, software developer/programmer and teacher, with the most common being engineer.

Students completed the post-graduate survey in May of 2004, prior to graduation, which was held May 8, 2004. Some students reported that they would become employed after graduations but did not have a job while responding to the survey. The same is true for students indicating their decision to go to graduate school. When filling out the survey, some students had not yet been accepted into graduate school.

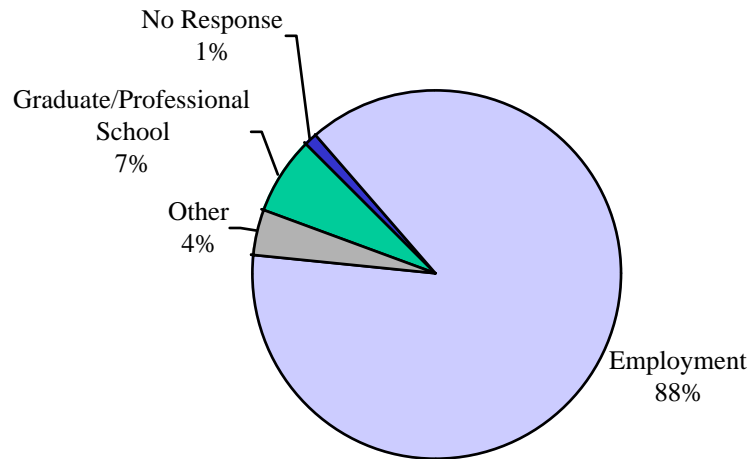
BA/BS Definite Plans for Fall 2004



MASTER'S/DOCTORATE DEGREE RECIPIENTS

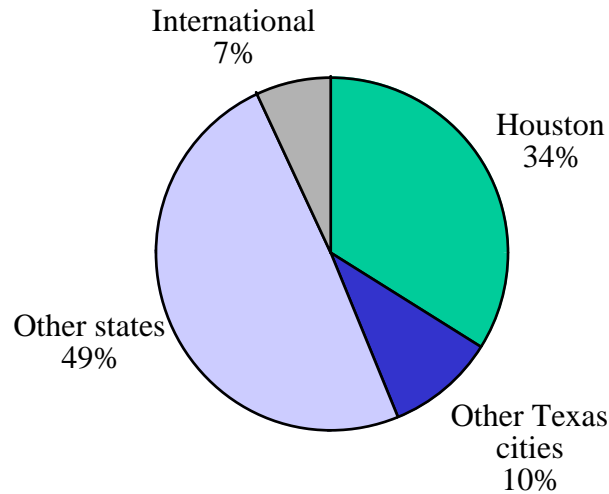
Eighty-eight percent of the graduate students responding to the survey reported that they had plans to enter the workforce after graduation. This figure is slightly higher than last year. And only seven percent indicated they would continue for an additional graduate degree. Additionally 4% were either unsure of their future plans or would pursue other options. One percent did not respond to this question.

Master's/Ph.D. Plans



Of those graduate students that reported that they had accepted jobs, 34% will work in Houston and 10% will work in other Texas cities. Forty-nine percent accepted positions in other states, and 7% plan to work outside of the United States.

Master's/Ph.D. Job Locations



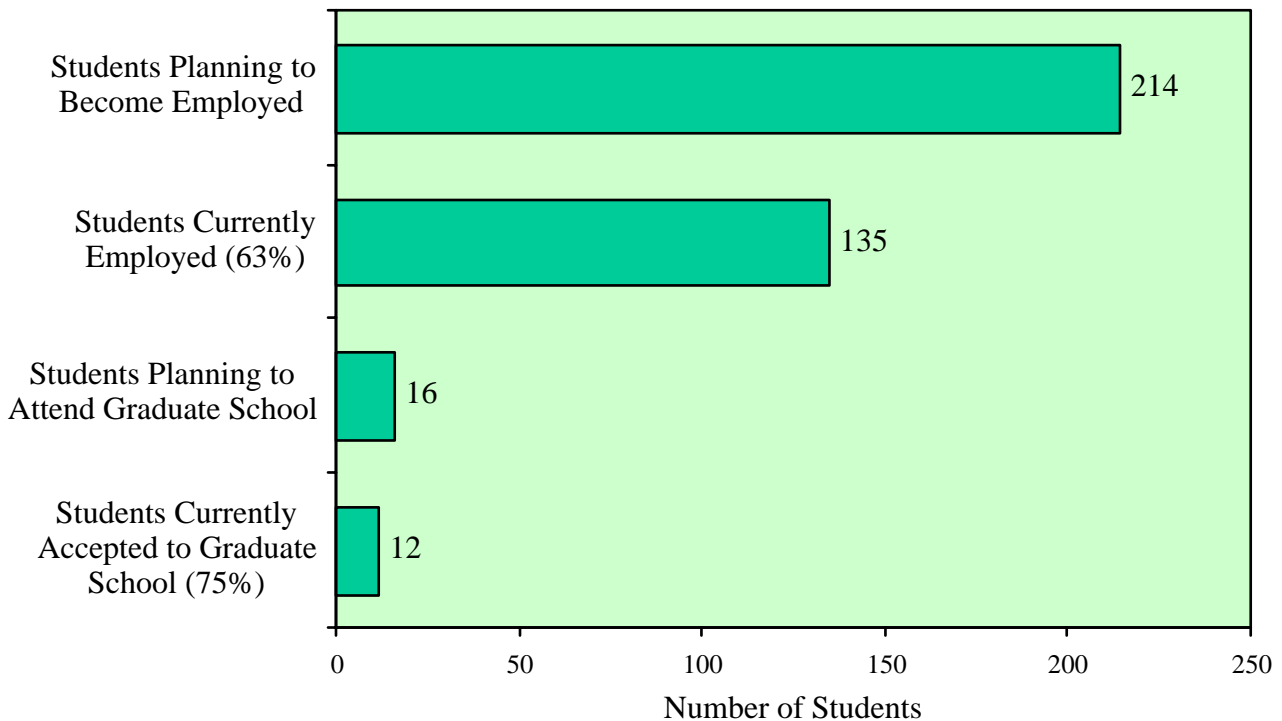
Of the students planning to enter the workforce, 58% will be working for businesses, while 39% will begin careers in academia. Three percent did not indicate their type of employment. The most common job titles included assistant professor, engineer, postdoctoral fellow, software engineer, scientist, teacher, with the most common being postdoctoral fellow.

Offers received by graduate students increased this year by 85%. The average salary offers slightly increased since last year for the following professions: engineer, lecturer, postdoctoral fellow, research assistant, scientist, and teacher. Salary offers slightly decreased this year for architects, assistant professors, military personnel, and musicians.

Seventy-four percent of the international graduate students who indicated they planned to become employed had accepted jobs. Of those, 84% will work in the United States and 13% chose positions outside of the United States. Three percent did not indicate where they would be working.

As mentioned with the bachelor candidates, students filled out this survey prior to graduation, which was held on May 8, 2004. Many graduate students actually completed this survey as early as March 2004, when they began to submit their theses. Some of the students indicated that they would become employed after graduation but did not have a job when responding to the survey.

Master's/Ph.D. Definite Plans for Fall 2004



Employers of 2004 BA/BS Students (All Degrees)

A.T. Kearney
Accenture (4)
Air Liquide Group
Allied Works Architecture
AmeriCorps
Pinchak and Associates
Arquitectonica
Bain and Company
Baker Botts (2)
Baltimore Ravens
Banfield Veterinary Clinic
Baylor College of Medicine (8)
Berwanger Inc.
BP Petroleum (6)
Calpine Energy Services (2)
Cambridge Associates
Campus Crusade for Christ
Capitol One
Carat USA
Carlson Capital
Carter and Burgess
Charlotte Coalition for a Moratorium
CZM Hill Engineering
ChevronTexaco (2)
China Public Schools
Citigroup
Cobasys
Constellation Power Source
Dallas Independent School District
Deloitte Consulting (2)
DoyleRaizner
DuPont
Dynalink Systems
Education Services International
Ernst and Young
Examiner News
ExxonMobil (4)
Gap International
Gensler Architecture
Goldman Sachs
Houston Independent School District (2)
IAESTE
InnerCity Teaching Corps
Intel Corporation
Japanese Exchange and Teaching Program (6)
Japan Ministry of Education
Jesuit Volunteer Corps
Jones McClure Publishing
JPMorgan Chase (3)
Korean Public Schools
KPF, London
Levin Group
Local Schools (2)
Lockheed Martin (2)
Lukens Energy Group
Lyondell Equistar (2)
Machado Silvetti
McKinsey and Co. (2)
McMaster-Carr Supply Company
MD Anderson
Med. Fit
Methodist Hospital
Michael Graves and Associates
Microsoft (3)
Mitchell/Giurgola Architects
Morgan Stanley
Motorola
Museum of Fine Arts, Houston
National Instruments (4)
NBBJ Architects
New York Public Schools (2)
Ong and Ong
Orbital Sciences Corporation
Pappas Restaurant Company
Pate Engineers
Peace Corps (6)
Pei, Cobb, Freed and Partners
Princeton Review (2)
Privacy Incorporated
Pros Revere Management (2)
Provident Reality Construction
Raytheon
Reliant Park
Rice University (2)
Rogers Marvel Architects
RT Solutions
Schlumberger (3)
Shell Oil

Employers of 2004 BA/BS Students (Continued)

Silver Eagle District
SMBology
Sioux Falls Canaries
Taipei Veterans General Hospital
Teach for America (3)
Travelers Property and Casualty
United Group Associations
United States Census Bureau
United States Government (2)
United States Marine Corps (2)
United States Navy (3)
University of Hawaii
University of Nebraska Medical Center
Valance Co.
Vector Marketing
Venturi Scott Brown Associates
Veritas DGC
Verizon
Viasat
Visual Action Photography
Watson Wyatt Worldwide
Weiss/Manfredi Architects
YES! College Preparatory
Zion National Park

Graduate and Professional School/Programs to be Attended by 2004 BA/BS Students

Alliant International University
Arizona State University (2)
Australian National University
Baylor College of Medicine (12)
Baylor University Law School
Boston University (3)
Carnegie Mellon University
Chapman University
Colburn School of Performing Arts
College of William and Mary
Columbia University (2)
Columbia University (law) (2)
Cornell University (law) (2)
DigiPen Institute of Technology
Duke University (2)
Ecole Polytechnique
Emory University (3)
Emory University (medicine)
Forham University (law)
George Mason University
George Washington University
Georgetown (law)
Harvard Law School (4)
Harvard University (2)
Harvard University (medicine)
Indiana University
London School of Economics
Louisiana State University – New Orleans
(medicine) (3)
Loyola University
Loyola University (medicine)
Medical University of South Carolina
Massachusetts Institute of Technology
New York Medical College (2)
New York University (2)
Northeastern University
Northeastern University (law)
Northwestern University
Ohio University (2)
Oxford University
Parsons School of Design (2)
Peabody Conservatory
Pennsylvania State University (2)
Portland State University
Rice University (25)
Rice University Business School (2)
Simmons College
Southern Methodist University
Stanford University (3)
Texas A&M University
Texas A&M University (medicine)
Texas Tech (medicine) (2)
The Juilliard School (2)
Tulane University Business School
Tulane University (medicine)
University College London
University of Arizona
University of Arizona (law)
University of California (law)
University of California – Berkeley (2)
University of California – Davis (2)
University of California – Irvine (3)
University of California – Los Angeles (2)
University of California – San Diego (4)
University of Chicago (3)
University of Chicago (law)
University of Chicago (medicine)
University of Connecticut (medicine)
University of Florida (2)
University of Florida (law)
University of Houston (3)
University of Houston Law Center (3)
University of Illinois
University of Iowa
University of Iowa (medicine)
University of Maryland
University of Maryland (medicine)
University of Michigan
University of Michigan (law)
University of North Texas (2)
University of Notre Dame
University of Oklahoma – Norman
University of Pennsylvania (4)
University of Pennsylvania (law)
University of Pittsburgh
University of Southern California
University of Southern California (law) (2)
University of Southern California (medicine)(2)
University of Southern Mississippi

Graduate and Professional Schools Attended by 2004 BA/BS Students (Continued)

University of Surrey Roehampton
University of Texas (3)
University of Texas – Austin (6)
University of Texas – Houston
University of Texas – Houston (medicine) (4)
University of Texas Law School (6)
University of Texas Medical Branch (4)
University of Texas – San Antonio (medicine) (4)
University of Texas Southwestern Medical School (20)
University of Washington
University of Washington (law)
University of Wisconsin (2)
Vanderbilt University
Washington University in St. Louis
Washington University in St. Louis (law)
Washington University in St. Louis (medicine) (2)

Employers of 2004 MA/MS/Ph.D. Students (All Degrees)

Allied Works Architecture
Anadarko Petroleum Corporation
At Last Software
Austrian Education Ministry
Bank of Korea
Baylor College of Medicine (5)
Berwanger Inc.
Boehringer Ingelheim
Brody School of Medicine
Central Intelligence Agency
Country Watch Inc.
Church of the Redeemer
Dallas Baptist University
David Milling and Associates
Dillon Kyle Architects
Draper Labs
Eli Lilly and Company
Emory University
Exxon Mobil (4)
Fermilab
General Electric
Gensler Architecture
Georgia Institute of Technology (2)
Google Inc. (2)
Halliburton (3)
HDR
Holmes, Hephner and Associates
Architects
Houston Independent School District (2)
Indiana University
Intel Corporation (2)
Johnson and Johnson – Ethicon
Kiwo Inc.
Korean Government
Lazard Freres
Local Schools (3)
Los Alamos National Lab (2)
Matrix Structural Engineers
McKinsey & Co
Medtronic Sofamor Danek
Metron Inc.
Michigan State University
Microsoft
Morehead State University
National Aeronautics Space
Administration (2)
Naval Research Laboratory
New World Symphony (2)
Nokia Research Center
Comptroller of the Currency
Opera in the Heights
PBK Architects
Pennsylvania State University (2)
Previze
Pros Revenue Management
Rafael Landivar University
Rensselaer Polytechnic Institute
Rice University (12)
Salem Evangelical Lutheran Church
San Diego Symphony
Schlumberger
Shell Oil (2)
Skyway Airlines
Skidmore, Owings, Merrill
Southwest Research Institute
SRSS Associated Inc.
St. Jude Children’s Hospital
Syracuse University
Tales and Scales
Texas A&M
The Philips Group
Towers Perrin
Trinity University
United States Air Force (5)
United States Army
United States Government
Universidad De Monterrey
Universities Space Research Association
University of California (3)
University of Colorado
University of Iowa
University of Michigan
University of Nevada
University of Oklahoma
University of Pennsylvania
University of Rochester
University of Victoria

Employers of 2004 MA/MS/Ph.D. Students (Continued)

University of Western Cape
University of Wisconsin
Veritas DGC
Warsaw Institute of Socio-Economic
Wiquest Communications
Williams College

Graduate and Professional Schools/Programs to be attended by 2003 MA/MS Students

Carnegie Mellon University
Cleveland Institute of Music (2)
DePaul University
Harvard University (2)
Louisiana State University
San Francisco Conservatory
Stanford University
University of Houston
University of Houston (law)
University of Iowa (law)
University of Montreal
University of Pennsylvania
University of Texas

Breakdown by Academic Department (BA/BS)

***Indicates multiple majors**

WEISS SCHOOL OF NATURAL SCIENCES

Astronomy

Number of students receiving degrees in astronomy: 3

Number of students responding to survey: 3

Employers of astronomy majors:

N/A

Graduate schools and fields of study:

Boston University (astronomy)

University of Chicago

University of Arizona (planetary science)

Biochemistry

Number of students receiving degrees in biochemistry: 39

Number of students responding to survey: 31

Employers of biochemistry majors:

Baylor College of Medicine

Citigroup*

Japanese Exchange and Teaching Program*

Taipei Veterans General Hospital*

Graduate schools and fields of study:

Baylor College of Medicine (5)*

Emory University (public health)*

Harvard Medical School

Louisiana State University – New Orleans (medicine)

Medical University of South Carolina

Portland State University (public health)

Stanford (biochemistry)

University of California – San Diego (medicine)*

University of Connecticut (medicine)*

University of Southern California (medicine)*

University of Texas – Austin (health education)

University of Texas – Houston (medicine)*

University of Texas Southwestern Medical School (5)*

Washington University in St. Louis (medicine)

Biology

Number of students receiving degrees in biology: 35

Number of students responding to survey: 34

Employers of biology majors:

Banfield Veterinary Clinic

Baylor College of Medicine (2)*

New York Public Schools*
University of Hawaii

Graduate schools and fields of study:

Arizona State University (ecology and plant biology)
Baylor College of Medicine
Parsons (art and design)*
Rice University (ecology and evolution)
Rice University Business School*
Simmons College (nursing)
Texas A&M University (medicine)
Texas Tech University (medicine)(2)*
University of California – Irvine
University of Iowa (medicine)*
University of Maryland (medicine)*
University of Nebraska (medicine)
University of Pittsburgh (medicine)*
University of Southern California – Keck (medicine)*
University of Texas – Houston (medicine)(2)
University of Texas – Houston (public health)
University of Texas Medical Branch (2)
University of Texas – San Antonio (medicine)(3)*
University of Texas Southwestern Medical School (2)*

Chemistry

Number of students receiving degrees in chemistry: 6
Number of students responding to survey: 4

Employers of chemistry majors:

MD Anderson*

Graduate schools and fields of study:

Rice University (chemistry)
University of Chicago (chemistry)
University of Chicago (medicine)

Earth Science

Number of students receiving degrees in earth science: 5
Number of students responding to survey: 2

Employers of earth science majors:

N/A

Graduate schools and fields of study:

Pennsylvania State University (geological sciences)*
Harvard University (geology and geophysics)

Mathematics

Number of students receiving degrees in mathematics: 14

Number of students responding to survey: 12

Employers of mathematics majors:

Campus Crusade for Christ*

Education Services International*

Japanese Exchange and Teaching Program*

Jesuit Volunteer Corps*

United States Census Bureau*

Graduate schools and fields of study:

Emory University (finance)

Harvard University (mathematics)*

Rice University (applied mathematics)*

University of Pennsylvania (mathematics)

Washington University in St. Louis (medicine)

Physics

Number of students receiving degrees in physics: 11

Number of students responding to survey: 11

Employers of physics majors:

Education Services International*

Morgan Stanley*

McMaster-Carr Supply Company*

Teach for America*

Graduate schools and fields of study:

Columbia University (mechanical engineering)

Ecole Polytechnique (physics)*

Rice University (physics)

SCHOOL OF SOCIAL SCIENCES

Anthropology

Number of students receiving degrees in anthropology: 23

Number of students responding to survey: 17

Employers of anthropology majors:

Baylor College of Medicine

JPMorgan Chase

Korean Public Schools

Teach for America*

Graduate schools and fields of study:

Baylor College of Medicine*

Baylor University (law)*

Oxford University (anthropology)*

University of Texas (health education)*

University of Texas (law)
University of Texas – San Antonio (medicine)*

Economics

Number of students receiving degrees in economics: 75

Number of students responding to survey: 64

Employers of economics majors:

Accenture
A.T. Kearney*
Bain and Company*
BP (3)*
Capitol One*
Carat USA*
Citigroup*
Deloitte Consulting*
Gap International*
Goldman Sachs*
Intel Corporation
Lukens Energy Group*
McKinsey and Co.*
Med. Fit
Peace Corps
Princeton Review
Provident Realty Construction
SMBology*
United States Government*
United States Marines
Vector Marketing

Graduate schools and fields of study:

Baylor College of Medicine*
London School of Economics*
Louisiana State University (medicine)*
Northeastern University (law)*
Rice University Business School
University of California – Berkeley*
University of California – San Diego (electrical engineering)*
University of Chicago (law)*
University of Houston (law)*
University of Pennsylvania (law)*
University of Texas (accounting)*
University of Texas – Austin (business)*
University of Texas Southwestern Medical School (4)*

Mathematical Economic Analysis

Number of students receiving degrees in mathematical economic analysis: 14

Number of students responding to survey: 13

Employers of mathematical economic analysis majors:

Calpine Energy Services (2)

Peace Corps*

The United States Census Bureau*

United States Peace Corps*

Watson Wyatt Worldwide*

Graduate schools and fields of study:

University of California – Davis (economics)

University of Houston (economics)*

University of Michigan (operations research)*

Political Science

Number of students receiving degrees in political science: 49

Number of students responding to survey: 47

Employers of political science majors:

BP*

Goldman Sachs*

Houston Independent School District*

Japanese Exchange and Teaching Program

Japanese Ministry of Education*

Levin Group

Lukens Energy Group*

McKinsey and Company*

Silver Eagle District

Travelers Property and Casualty*

Graduate schools and fields of study:

Baylor College of Medicine

Fordham University Law School

Harvard University Law School (2)*

Massachusetts Institute of Technology (civil engineering)*

Northeastern University (law)

St. Mary's University (international law)

University of California (law)

University of California – Berkeley (American politics)*

University of California – Los Angeles (sociology)

University of California – San Diego (political science)*

University of Chicago (law)*

University of Houston (law)(2)

University of Maryland (family studies)*

University of Texas (law)(5)*

Washington University in St. Louis (law)*

Psychology

Number of students receiving degrees in psychology: 42

Number of students responding to survey: 36

Employers of psychology majors:

N/A

Graduate schools and fields of study:

Alliant International University (clinical psychology)
Carnegie Mellon University (cognitive psychology)*
Cornell (law)*
Emory University (medicine)
George Mason University (industrial organizational psychology)
George Washington University (international affairs)*
Georgetown University (law)*
New York Medical College
New York University (social psychology)
Pennsylvania State University (developmental psychology)
Southern Methodist University (biblical studies/theology)*
Tulane Business School
University of California – Irvine (cognitive science)*
University of Houston (clinical psychology)*
University of Michigan (law)*
University of Pennsylvania (orthopedics)
University of Pennsylvania (law)*
University of Southern Mississippi (clinical psychology)
University of Surrey Roehampton (international service)*
University of Texas – Houston (medicine)
University of Texas Medical Branch (2)
University of Texas Southwestern Medical School (2)

Sociology

Number of students receiving degrees in sociology: 18

Number of students responding to survey: 15

Employers of sociology majors:

Ernst and Young*
Intel Corporation*
JPMorgan Chase*
New York Public Schools*

Graduate schools and fields of study:

Baylor College of Medicine
University College of London (medicine)
University of Notre Dame (sociology)

GEORGE R. BROWN SCHOOL OF ENGINEERING

Bioengineering

Number of students receiving degrees in bioengineering: 33

Number of students responding to survey: 24

Employers of bioengineering majors:

Baylor College of Medicine (2)
IAESTE
Rice University

Graduate schools and fields of study:

Arizona State University (bioengineering)
Duke University (medicine)
Duke University (biomedical engineering)
Louisiana State University (medicine)
Loyola University (medical science)
New York Medical School
Rice University (bioengineering)
Rice University (environmental engineering)
University of California – Davis (bioengineering)
University of Texas – Austin (biomedical engineering)
University of Texas Southwestern Medical School (3)
University of Washington (bioengineering)
Vanderbilt University (bioengineering)
Washington University in St. Louis (biomedical engineering)

Chemical Engineering

Number of students receiving degrees in chemical engineering: 17
Number of students responding to survey: 15

Employers of chemical engineering majors:

Air Liquide Group
Berwanger Inc.
ChevronTexaco
Deloitte*
DuPont
ExxonMobil
Lyondell Equistar
Pate Engineers
United States Navy

Graduate schools and fields of study:

University of Florida (chemical engineering)

Civil Engineering

Number of students receiving degrees in civil engineering: 11
Number of students responding to survey: 9

Employers of civil engineering majors:

CZM Hill Engineering
Carter and Burgess
ExxonMobil*

Graduate schools and fields of study:
Massachusetts Institute of Technology (civil engineering)*
University of California – Berkeley (transportation)*
University of Illinois (structural engineering)(2)*

Computational and Applied Mathematics

Number of students receiving degrees in computational and applied mathematics: 4
Number of students responding to survey: 4

Employers of computational and applied mathematics majors:
Veritas DGC

Graduate schools and fields of study:
Rice University (applied mathematics)*
University of Michigan (operations research)*

Computer Science

Number of students receiving degrees in computer science: 34
Number of students responding to survey: 25

Employers of computer science majors:
Carlson Capital*
JPMorgan Chase (2)*
Microsoft (3)
National Instruments (2)*
Privacy Inc.
Pros Revenue Management (2)
Schlumberger

Graduate schools and fields of study:
Rice University (computer science) (4)*
University of California – Berkeley (computer science)

Electrical and Computer Engineering

Number of students receiving degrees in electrical and computer engineering: 7
Number of students responding to survey: 6

Employers of electrical and computer engineering majors:
Accenture
YES! College Preparatory*

Graduate schools and fields of study:
University of Wisconsin – Madison (electrical and applied physics)

Electrical Engineering

Number of students receiving degrees in electrical engineering: 41
Number of students responding to survey: 32

Employers of electrical engineering majors:

Accenture (2)
Cobasys
Lockheed Martin Aeronautics
Motorola
National Instruments (2)
Raytheon
United States Navy
Valance
Verizon
Viasat*

Graduate schools and fields of study:

Rice University (computer sciences) (4)*
Rice University (electrical engineering)(5)*
Texas A&M University (bioengineering)
University of California – San Diego (electrical engineering)*
University of Florida (law)
University of Texas – Austin (law)
University of Texas Southwestern Medical School

Environmental Science and Engineering

Number of students receiving degrees in environmental science and engineering: 3
Number of students responding to survey: 3

Employers of environmental science and engineering majors:

ExxonMobil*
Peace Corps*

Graduate schools and fields of study:

Pennsylvania State University (geological sciences)*

Mechanical Engineering

Number of students receiving degrees in mechanical engineering: 29
Number of students responding to survey: 23

Employers of mechanical engineering majors:

A.T.Kearney
BP
ChevronTexaco
Constellation Power Source
ExxonMobil
Japanese Exchange Teaching Program
Lyondell Equistar
Orbital Sciences Corporation
Schlumberger
Shell Oil

Graduate schools and fields of study:

Loyola (medicine)

Notre Dame (aerospace engineering)
Rice University (mechanical engineering)
Stanford (mechanical engineering)*
Stanford (aeronautics)

Statistics

Number of students receiving degrees in statistics: 2
Number of students responding to survey: 2

Employers of statistics majors:
United States Census Bureau*

Graduate schools and fields of study:
University of Houston (economics)*

SCHOOL OF ARCHITECTURE

Number of students receiving degrees in architecture: 38
Number of students responding to survey: 24

Employers of architecture majors:
Allied Works Architecture
Arquitectonica
Cambridge Associates
Gensler Architecture
KPF London
Machado Silvetti
Michael Graves and Associates
Mitchell/Giurgola Architects
NBBJ
Ong and Ong
Pei, Cobb, Freed and Partners
Roger Marvel Architects
Venturi, Scott, Brown Associates
Weiss/Manfredi Architects

Graduate schools and fields of study:
Rice University (9)*

(Please note that many of the employers listed above are through the Rice Preceptorship Program which involves only one year of work)

SHEPHERD SCHOOL OF MUSIC

Number of students receiving degrees in music: 24
Number of students responding to survey: 21

Employers of music majors:
Japanese Exchange and Teaching Program*

Graduate schools and fields of study:
Arizona State University (vocal performance)
Boston University (music)
Boston University (orchestral conducting)
Colburn School of Performing Arts (violin performance)
Northeastern University (accounting)
Northwestern (orthotics/prosthetics)
Ohio University (music)
Peabody Conservatory (music performance)
Rice University (English education)*
The Julliard School (violin performance)
The Julliard School (voice)
University of Oklahoma – Norman (music)
Yale University (violin performance)

SCHOOL OF HUMANITIES

Art and Art History

Number of students receiving degrees in art and art history: 42

Number of students responding to survey: 32

Employers of art and art history majors:

Arquitectonics*
Baker Botts*
Gensler Architecture*
Ernst and Young*
Jones McClure Publishing
Methodist Hospital
Michael Graves and Associates*
Mitchell/Giurgola Architects*
National Instruments*
NBBJ*
New York Public Schools*
Ong and Ong*
Peace Corps*
United States Government*
Venturi Scott Brown Associates*

Graduate schools and fields of study:

DigiPen Institute of Technology (computer animation)*
Parsons School of Design (art and design)*
Parsons School of Design (fashion)*
Pei, Cobb, Freed and Partners*
Rice University (applied mathematics)*
Stanford University (mechanical engineering)*
Texas Tech University (medicine)*
University of Pennsylvania (art history)*
University of Southern California (film)
University of Southern California (law)*

English

Number of students receiving degrees in English: 54

Number of students responding to survey: 47

Employers of English majors:

AmeriCorps

Carat USA*

Dallas Independent School District

Dynalink Systems*

Examiner News

Houston Independent School District

InnerCity Teaching Corporation

Japanese Exchange and Teaching Program*

McAdams Junior High School

Museum of Fine Arts Houston*

Teach for America*

United States Government

Graduate schools and fields of study:

Columbia University (law)*

Georgetown University (law)*

Ohio University (sports management, business)*

Parsons School of Design (fashion)*

Rice University (English education) (2)*

University of Florida (chemistry)

University of Houston (law)*

University of Iowa (English literature)*

University of Southern California (law)*

University of Texas (law) (2)*

University of Texas – Austin (American studies)*

University of Texas Southwestern Medical School

Washington University in St. Louis (law)*

St. Mary's University (international law)*

University of North Texas (health care administration)*

French Studies

Number of students receiving degrees in French studies: 9

Number of students responding to survey: 7

Employers of French studies majors:

RT Solutions

Graduate schools and fields of study:

Baylor College of Medicine*

Columbia University (international corporate law)*

Ecole Polytechnique (physics)*

University of California – Berkeley (American politics)*

University of Pennsylvania (art history)*

German

Number of students receiving degrees in German: 4

Number of students responding to survey: 4

Employers of German majors:

N/A

Graduate schools and fields of study:

Emory University (public health)*

University of Houston (theater performance)*

Hispanic and Classical Studies

Number of students receiving degrees in Hispanic and classical studies: 6

Number of students responding to survey: 5

Employers of Hispanic and classical studies majors:

YES! College Preparatory*

Graduate schools and fields of study:

Harvard University (mathematics)*

Rice University (Hispanic and classical studies)

History

Number of students receiving degrees in history: 51

Number of students responding to survey: 44

Employers of history majors:

Baker Botts*

Baylor College of Medicine*

Charlotte Coalition for a Moratorium

Doyle and Raizner

Dynalink Systems*

Houston Independent School District*

Japanese Exchange and Teaching Program

McMaster-Carr Supply Company*

Peace Corps

Teach for America

Zion National Park

Graduate schools and fields of study:

Australian National University (international affairs)

Baylor College of Medicine

Cornell University (law)*

Harvard University Law School (2)*

London School of Economics (gender and public policy)*

Rice University Business School

University of Arizona (law)*

University of Illinois (structural engineering)*

University of Maryland (family studies)*

University of Maryland (medicine)*

University of Pennsylvania (city planning)
University of Pittsburgh (medicine)*
University of Southern California (medicine)*
University of Texas – Austin (American studies)*
University of Texas – Austin (business)*
University of Texas Southwestern Medical School (2)*
University of Wisconsin (curriculum instruction)

Kinesiology

Number of students receiving degrees in kinesiology: 41

Number of students responding to survey: 22

Employers of kinesiology majors:

Baltimore Ravens

BP*

Pappas Restaurant Company*

Reliant Park*

Sioux Falls Canaries*

Graduate schools and fields of study:

Baylor College of Medicine

Chapman University (film production)

Ohio University (sports management and business)*

University of Houston (speech pathology)*

University of Washington (law)*

University of Texas – San Antonio (medicine)*

Linguistics

Number of students receiving degrees in linguistics: 7

Number of students responding to survey: 7

Employers of linguistics majors:

N/A

Graduate schools and fields of study:

Graduate Institute of Applied Linguistics (linguistics)*

University of Houston (speech pathology)*

University of Houston (theater performance)*

Yale University (neurolinguistics)

University of Texas – Austin (language pathology)*

Philosophy

Number of students receiving degrees in philosophy: 19

Number of students responding to survey: 16

Employers of philosophy majors:

Gap International*

Japanese Exchange and Teaching Program*

Jesuit Volunteer Corps*

New York Public Schools*
Reliant Park*
United States Marine Corps*

Graduate schools and fields of study:

Columbia University (law)*
Cornell University (law)*
University of California – Los Angeles (science)*
University of Iowa (medicine)*
University of Texas (law)*

Religious Studies

Number of students receiving degrees in religious studies: 15
Number of students responding to survey: 14

Employers of religious studies majors:

BP*
MD Anderson*

Graduate schools and fields of study:

Baylor College of Medicine*
Emory University (theology)*
Rice University (computer science)*
University of California – Los Angeles (science)*
University of Chicago (Middle Eastern studies)*
University of Houston (clinical psychology)*
University of Texas (health education)*

Slavic Studies

Number of students receiving degrees in Slavic studies: 5
Number of students responding to survey: 5

Employers of Slavic studies majors:

Museum of Fine Arts Houston*
United States Navy*

Graduate schools and fields of study:

University of Texas (medicine)*

Spanish

Number of students receiving degrees in Spanish: 16
Number of students responding to survey: 12

Employers of Spanish majors:

Baylor College of Medicine*
Japanese Exchange and Teaching Program(2)*

Graduate schools and fields of study:
George Washington University (international affairs)*
Oxford University (anthropology)*
University of Arizona (law)*
University of Texas Southwestern Medical School*

INTERDEPARTMENTAL MAJORS

Ancient Mediterranean Civilizations

Number of students receiving degrees in ancient Mediterranean civilizations: 3
Number of students responding to survey: 2

Employers of ancient Mediterranean civilizations majors:
N/A

Graduate schools and fields of study:
University of Iowa (English literature)*
University of Surrey Roehampton (international service)*

Asian Studies

Number of students receiving degrees in Asian studies: 10
Number of students responding to survey: 6

Employers of Asian studies majors:
China Public Schools
Japanese Exchange and Teaching Program*

Graduate schools and fields of study:
Harvard University Law School*
University of Texas (law)*

Cognitive Sciences

Number of students receiving degrees in cognitive sciences: 11
Number of students responding to survey: 7

Employers of cognitive sciences majors:
Japanese Exchange and Teaching Program*
United States Marine Corps*

Graduate schools and fields of study:
Carnegie Mellon University (cognitive psychology)*
Graduate Institute of Applied Linguistics (linguistics)*
University of California – Irvine (cognitive science)*
University of Texas – Austin (speech – language pathology)*

Managerial Studies

Number of students receiving degrees in managerial studies: 46
Number of students responding to survey: 40

Employers of managerial studies majors:

Bain and Company*

BP (2)*

Campus Crusade for Christ*

Capitol One*

Carlson Capital*

Ernst and Young*

Lukens Energy Group*

Pappas Restaurant and Co.*

Sioux Falls Canaries*

Travelers Property and Casualty*

United Group Association*

Watson Wyatt Worldwide *

Graduate schools and fields of study:

DigiPen Institute of Technology (computer animation)*

Louisiana State University (medicine)*

Rice University (electrical engineering)*

Southern Methodist University (biblical studies/theology)

Policy Studies

Number of students receiving degrees in policy studies: 18

Number of students responding to survey: 14

Employers of policy studies majors:

Teach for America*

United States Government*

Graduate schools and fields of study:

Baylor Law School*

Columbia University (international corporate law)*

London School of Economics (gender and public policy)*

University of California – San Diego (political science)*

University of North Texas (health care administration)*

Study of Women and Gender

Number of students receiving degrees in study of women and gender: 6

Number of students responding to survey: 4

Employers of study of women and gender majors:

N/A

Graduate schools and fields of study:

Emory University (theology)*

University of Michigan (law)*

University of Houston (law)*

Breakdown by Academic Department (MA/MS/Ph.D.)

WEISS SCHOOL OF NATURAL SCIENCES

Biochemistry and Cell Biology

Number of students receiving MA/MS & Ph.D. degrees in biochemistry and cell biology: 9

Number of students responding to survey: 9

Employers of biochemistry and cell biology majors:

Baylor College of Medicine

Boehringer – Ingelheim

Rice University (3)

St. Jude Children’s Hospital

Graduate schools and fields of study:

Baylor College of Medicine

Ecology and Evolutionary Biology

Number of students receiving MA/MS & Ph.D. degrees in ecology and evolutionary biology: 4

Number of students responding to survey: 2

Employers of ecology and evolutionary biology majors:

N/A

Graduate schools and fields of study:

N/A

Chemistry

Number of students receiving MA/MS & Ph.D. degrees in chemistry: 29

Number of students responding to survey: 13

Employers of chemistry majors:

Emory University

Halliburton (3)

Intel Corporation

Rice University

United States Air Force (2)

University of Iowa

Graduate schools and fields of study:

University of Houston (law)

Earth Science

Number of students receiving MA/MS & Ph.D. degrees in earth science: 7

Number of students responding to survey: 7

Employers of earth science majors:

Anadarko Petroleum Corporation

ExxonMobil (3)

Kiwo Inc.
Shell Oil (2)

Graduate schools and fields of study:
N/A

Mathematics

Number of students receiving MA/MS & Ph.D. degrees in mathematics: 13
Number of students responding to survey: 5

Employers of mathematics majors:
University of California
University of Oklahoma
University of Pennsylvania
University of Rochester

Graduate schools and fields of study:
Louisiana State University

Physics

Number of students receiving MA/MS & Ph.D. degrees in physics: 12
Number of students responding to survey: 6

Employers of physics majors:
Fermilab
Naval Research Laboratory
Trinity University

Graduate schools and fields of study:
Stanford University (mesoscopic physics)

Space Physics and Astronomy

Number of students receiving MA/MS & Ph.D. degrees in space physics and astronomy: 13
Number of students responding to survey: 10

Employers of space physics and astronomy majors:
Houston Independent School District
Los Alamos National Labs
National Aeronautics and Space Administration
Redd School of Houston

Graduate schools and fields of study:
University of Montreal (engineering physics)

SCHOOL OF SOCIAL SCIENCES

Anthropology

Number of students receiving MA/MS & Ph.D. degrees in anthropology: 7
Number of students responding to survey: 4

Employers of anthropology majors:

Baylor College of Medicine
Rafael Landivar University
University of Michigan

Graduate schools and fields of study:

N/A

Economics

Number of students receiving MA/MS & Ph.D. degrees in economics: 9

Number of students responding to survey: 9

Employers of economics majors:

Bank of Korea
Korean Government
Office of the Comptroller of the Currency
United States Government
University of Victoria
Warsaw Institute of Socio-Economic Research

Graduate schools and fields of study:

N/A

Political Science

Number of students receiving MA/MS & Ph.D. degrees in political science: 10

Number of students responding to survey: 4

Employers of political science majors:

Pennsylvania State University (2)

Graduate schools and fields of study:

N/A

Psychology

Number of students receiving MA/MS & Ph.D. degrees in psychology: 17

Number of students responding to survey: 7

Employers of psychology majors:

Peace Corps
University of Wisconsin

Graduate schools and fields of study:

University of Houston (clinical neurology)
University of Pennsylvania (marketing)

GEORGE R. BROWN SCHOOL OF ENGINEERING

Bioengineering

Number of students receiving MA/MS & Ph.D. degrees in bioengineering: 17

Number of students responding to survey: 17

Employers of bioengineering majors:

Eli Lilly

Georgia Institute of Technology (2)

Johnson and Johnson

Lazard Freres

Los Alamos National Lab

Medtronic Sofamor Danek

Rice University (2)

University of California

University of Colorado

Graduate schools and fields of study:

University of Iowa (law)

Chemical Engineering

Number of students receiving MA/MS & Ph.D. degrees in chemical engineering: 6

Number of students responding to survey: 6

Employers of chemical engineering majors:

Berwanger Inc.

General Electric

Schlumberger

Graduate schools and fields of study:

N/A

Civil and Environmental Engineering

Number of students receiving MA/MS & Ph.D. degrees in civil and environmental engineering: 16

Number of students responding to survey: 6

Employers of civil and environmental engineering majors:

HDR

Matrix Structural Engineers

Michigan State University

Graduate schools and fields of study:

Carnegie Mellon (civil and environmental engineering)

Computational and Applied Mathematics

Number of students receiving MA/MS & Ph.D. degrees in computational and applied mathematics: 12

Number of students responding to survey: 7

Employers of computational and applied mathematics majors:

Central Intelligence Agency

Metron Inc.

Pros Revenue Management

Rice University

Towers Perrin

Graduate schools and fields of study:

N/A

Computer Science

Number of students receiving MA/MS & Ph.D. degrees in computer science: 15

Number of students responding to survey: 6

Employers of computer science majors:

Rice University (2)

Google Inc. (2)

Indiana University

Graduate schools and fields of study:

N/A

Electrical and Computer Engineering

Number of students receiving MA/MS & Ph.D. degrees in electrical and computer engineering: 18

Number of students responding to survey: 13

Employers of electrical and computer engineering majors:

ExxonMobil

Intel Corporation

McKinsey and Co.

Microsoft

Nokia

Peace Corps*

United States Air Force

Wiquest Communications

Graduate schools and fields of study:

N/A

Statistics

Number of students receiving MA/MS & Ph.D. degrees in statistics: 9

Number of students responding to survey: 4

Employers of statistics majors:

Texas A&M University

Universities Space Research Association

Graduate schools and fields of study:

N/A

SCHOOL OF ARCHITECTURE

Number of students receiving MA/MS & Ph.D. degrees in architecture: 28

Number of students responding to survey: 28

Employers of architecture majors:

Allied Works Architects
At Last Software
David Milling and Associates
Dillon Kyle Architects
Gensler Architecture
Holmes, Hepner and Associates Architects
PBK Architects
Skidmore, Owings, Merrill
SRSS Associated Inc.
The Philips Group

Graduate schools and fields of study:

Harvard (architecture)

SHEPHERD SCHOOL OF MUSIC

Number of students receiving MA/MS & Ph.D. degrees in music: 67

Number of students responding to survey: 47

Employers of music majors:

Austrian Education Ministry
Church of the Redeemer
DePaul University
New World Symphony (2)
Opera in the Heights
Rice University
Salem Evangelical Lutheran Church
San Diego Symphony
Skyway Airlines
Syracuse University
Tales and Scales
United States Army

Graduate schools and fields of study:

Cleveland Institute of Music (music)
Cleveland Institute of Music (viola)
San Francisco Conservatory (music)

SCHOOL OF HUMANITIES

Education

Number of students receiving MA/MS & Ph.D. degrees in education: 3

Number of students responding to survey: 3

Employers of education majors:
Houston Independent School District
Kinkaid School

Graduate schools and fields of study:
N/A

English

Number of students receiving MA/MS & Ph.D. degrees in English: 11
Number of students responding to survey: 6

Employers of English majors:
Baylor College of Medicine
Dallas Baptist University
Duchesne Academy

Graduate schools and fields of study:
N/A

History

Number of students receiving MA/MS & Ph.D. degrees in history: 11
Number of students responding to survey: 3

Employers of history majors:
University of Western Cape

Graduate schools and fields of study:
N/A

Philosophy

Number of students receiving MA/MS & Ph.D. degrees in philosophy: 5
Number of students responding to survey: 5

Employers of philosophy majors:
Brody School of Medicine
Morehead State University
University of Nevada

Graduate schools and fields of study:
N/A

Religious Studies

Number of students receiving MA/MS & Ph.D. degrees in religious studies: 4
Number of students responding to survey: 2

Employers of religious studies majors:
Allegheny College
Williams College

Graduate schools and fields of study: N/A

Salary Report
BACHELOR'S DEGREE RECIPIENTS

Classified by Major
(Data Gathered May 2004)

Major	Number of Offers	Salary Low	Salary High	Average Offer Made	Average Salary Accepted	Average Signing Bonus
Anthropology	5	17,280	55,000	33,560	33,200	5,000
Architecture	14	24,000	45,000	31,750	31,750	N/A
Art and Art History	20	28,500	70,000	39,110	41,500	7,500
Asian Studies	2	35,000	35,000	35,000	35,000	N/A
Biochemistry	5	20,000	55,000	31,000	31,000	8,000
Bioengineering	6	25,000	27,000	26,000	26,000	2,000
Biology	3	24,000	39,500	29,500	29,500	N/A
Chemical Engineering	15	40,000	63,000	54,130	53,800	4,300
Chemistry	1	N/A	N/A	24,000	24,000	N/A
Civil Engineering	5	45,000	78,000	55,125	57,700	4,250
Comp. and App. Mathematics	1	N/A	N/A	48,600	48,600	N/A
Computer Science	27	45,000	75,000	57,570	57,360	2,900
Cognitive Sciences	2	25,000	32,000	28,500	28,500	N/A
Economics	36	28,000	65,000	45,700	46,850	4,610
Elec. and Comp. Engineering	3	33,000	52,000	47,300	42,500	2,000
Electrical Engineering	32	42,000	62,000	52,600	52,100	16,000
English	18	10,000	41,000	30,100	30,320	1,000
Environmental Engineering	1	N/A	N/A	78,000	78,000	6,000
French	1	N/A	N/A	30,000	30,000	N/A
Hispanic and Classical Studies	1	N/A	N/A	33,000	33,000	N/A
History	12	18,000	55,000	31,000	30,200	4,000
Kinesiology	3	28,000	50,000	39,000	39,000	N/A
Managerial Studies	19	8,000	100,000	50,000	52,600	3,700
Mathematics	5	8,000	38,000	22,000	22,000	3,800
Math. Economic Analysis	6	38,000	51,000	44,000	44,000	3,800
Mechanical Engineering	17	35,000	60,000	53,175	53,280	4,300
Music	2	32,000	50,000	41,000	41,000	N/A
Philosophy	6	10,000	50,000	30,750	30,750	N/A
Physics	4	39,000	55,000	49,700	49,700	4,500
Political Science	14	25,000	65,000	39,300	45,640	2,500
Policy Studies	4	25,000	35,000	43,375	29,500	7,500
Religious Studies	3	24,000	45,000	29,000	34,500	N/A
Slavic studies	1	N/A	N/A	42,000	42,000	10,000
Sociology	7	39,000	39,000	39,000	39,000	N/A
Spanish	3	20,000	35,000	29,000	29,000	N/A
Total	304					

Please note that many Rice students graduate with more than one degree. The students' salary information is listed under each degree they receive; therefore, the salary information listed above might be higher or lower in some degree categories.

Salary Report
BACHELOR'S DEGREE RECIPIENTS

Classified by Occupation
(Data Gathered May 2004)

Occupation	Number of Offers	Salary Low	Salary High	Average Offer Made	Average Salary Accepted	Average Signing Bonus
Accountant	6	26,000	50,000	31,700	35,000	N/A
Actuarial	1	N/A	N/A	51,000	51,000	N/A
Architect	14	24,000	45,000	31,750	31,750	N/A
Computer Programmer	2	52,000	55,000	53,500	53,500	N/A
Consultant	9	40,000	59,200	47,700	50,550	2,500
Design Engineer	5	50,000	60,000	52,375	54,000	N/A
Field Engineer	3	52,800	59,000	52,270	55,900	N/A
Financial Analyst	28	42,500	100,000	54,000	56,300	4,600
Legal Assistant	7	26,000	33,600	29,600	28,900	N/A
Manager	6	18,000	55,000	37,200	34,500	10,000
Military	3	25,000	42,000	32,300	32,300	10,000
Other Engineer	31	40,000	63,000	53,340	52,370	5,170
Process Engineer	3	57,000	59,200	58,500	58,100	N/A
Researcher	9	20,000	36,000	34,000	34,000	2,000
Software Designer	8	45,000	75,000	57,700	57,700	3,750
Teacher	28	17,280	41,000	33,500	33,000	1,000

Salary Report
MASTER AND DOCTORATE DEGREE RECIPIENTS

Classified by Major
(Data Gathered May 2004)

Major	Number of Offers	Salary Low	Salary High	Average Offer Made	Average Salary Accepted	Average Signing Bonus
Anthropology	4	40,000	55,000	45,000	48,300	N/A
Architecture	14	32,000	45,000	37,500	38,300	3,600
Biochemistry	8	30,000	85,000	40,500	42,600	N/A
Bioengineering	20	35,000	80,000	49,600	49,800	5,000
Comp. and Applied Math	8	48,000	88,000	66,500	64,200	5,000
Chemical Engineering	3	25,000	69,000	52,700	52,700	3,000
Civil and Env. Engineering	7	53,000	65,000	62,000	59,300	5,000
Computer Science	9	50,000	103,000	79,000	77,500	8,000
Elec. and Comp. Engineering	13	43,000	130,000	81,100	85,100	6,200
Economics	14	25,000	81,000	62,000	59,800	N/A
Education	4	35,000	36,000	35,500	35,500	N/A
English	3	45,000	45,000	45,000	45,000	N/A
Mathematics	9	42,000	50,900	44,600	45,980	N/A
Music	12	12,000	60,000	31,300	31,300	10,000
Philosophy	3	47,000	65,000	56,000	56,000	N/A
Physics	4	35,000	55,000	48,000	48,000	N/A
Physics and Astronomy	11	37,000	100,000	55,300	52,200	N/A
Political Science	4	63,000	63,000	61,000	63,000	N/A
Religious Studies	2	43,000	43,000	43,000	43,000	N/A
Statistics	3	65,000	65,000	54,300	65,000	N/A

Salary Report
MASTER AND DOCTORATE DEGREE RECIPIENTS

Classified by Occupation
(Data Gathered May 2004)

Occupation	Number of Offers	Salary Low	Salary High	Average Offer Made	Average Salary Accepted	Average Signing Bonus
Analyst	4	61,000	88,000	73,750	72,300	N/A
Architect	7	32,000	41,000	36,600	36,600	N/A
Assistant Professor	27	25,000	73,000	54,750	55,000	N/A
Astronaut	1	N/A	N/A	100,000	100,000	N/A
Consultant	5	64,000	130,000	89,300	89,300	7,500
Data Processor	1	N/A	N/A	50,000	50,000	N/A
Designer	4	36,000	38,000	34,700	37,000	3,600
Economist	1	N/A	N/A	81,000	81,000	N/A
Engineer	20	25,000	103,000	64,000	67,400	5,300
Geologist	14	70,000	77,000	70,900	74,500	7,000
Lecturer/Instructor	18	40,000	70,000	57,000	50,600	N/A
Marketing Director	1	N/A	N/A	40,000	40,000	N/A
Military	4	20,000	35,000	27,500	27,500	N/A
Musician	9	12,000	60,000	27,800	27,800	N/A
Postdoctoral Fellow	29	30,000	55,000	41,400	40,000	N/A
Research Associate	11	35,000	80,000	51,380	55,000	N/A
Scientist	13	38,000	93,200	72,400	77,400	N/A
Study Manager	1	N/A	N/A	50,000	50,000	N/A
Teacher	8	35,000	40,000	37,000	37,000	N/A
Writer	2	52,000	52,000	47,600	52,000	5,000

Appendix I:
COMPARISON OF RICE SALARIES TO NATIONAL AVERAGES*
Bachelor's Degree Recipients
Classified by Major and Occupation

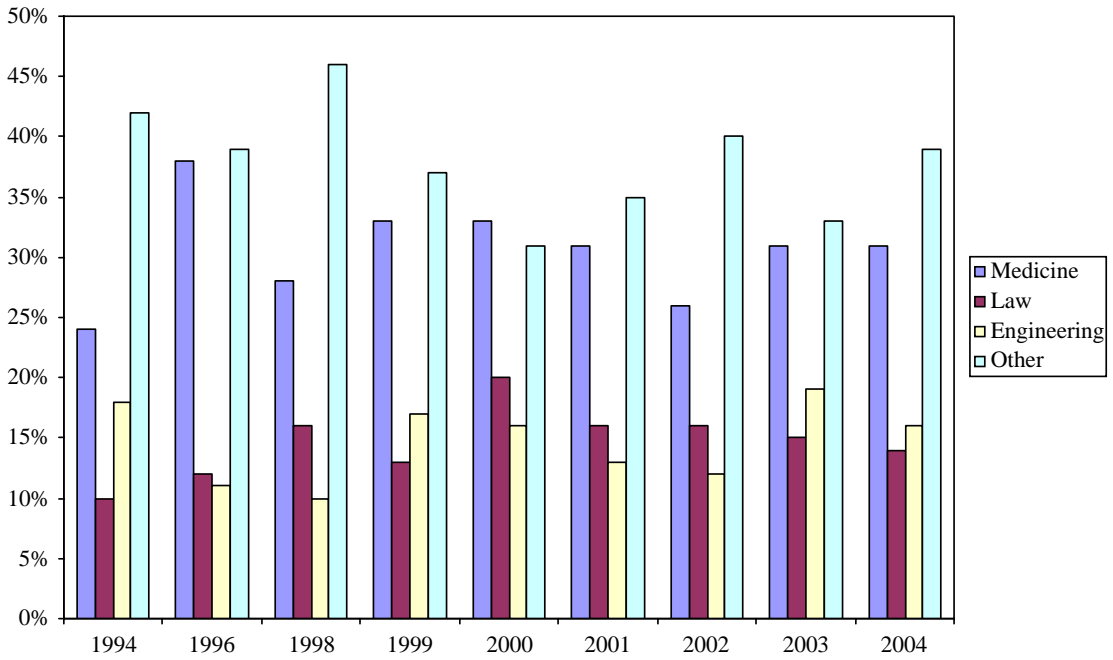
Major	Number of Rice Offers	Rice Salary Average	National Average	% Difference
Architecture	14	31,750	30,000	6%
Biology	3	29,500	27,443	7%
Chemical Engineering	15	54,130	52,038	4%
Chemistry	1	24,000	31,003	-23%
Civil Engineering	5	55,125	41,785	32%
Computer Science	27	57,570	50,007	15%
Economics	36	45,700	40,718	12%
Electrical Engineering	32	52,600	50,761	4%
English	18	30,100	30,554	-1%
Environmental Engineering	1	78,000	39,478	98%
History	12	31,000	31,147	0%
Mechanical Engineering	17	53,175	49,056	8%
Physics	4	49,700	46,375	7%
Political Science	14	39,300	28,071	40%
Sociology	7	39,000	28,065	39%

Occupation	Number of Rice Offers	Rice Salary Average	National Average	% Difference
Accountant	6	31,700	41,399	-23%
Actuarial	1	51,000	50,000	2%
Architect	14	31,750	32,000	-.8%
Computer Programmer	2	53,500	48,547	10%
Consultant	9	47,700	48,247	-1%
Design Engineer	5	52,375	43,668	20%
Field Engineer	3	52,270	45,246	16%
Financial Analyst	28	54,000	43,385	24%
Legal Assistant	7	29,600	31,033	-5%
Manager	6	37,200	35,852	4%
Military	3	32,300	39,921	-19%
Other Engineer	31	53,340	48,168	11%
Process Engineer	3	58,500	53,342	10%
Researcher	9	34,000	33,815	.5%
Software Designer	8	57,700	53,630	8%
Teacher	28	33,500	29,551	13%

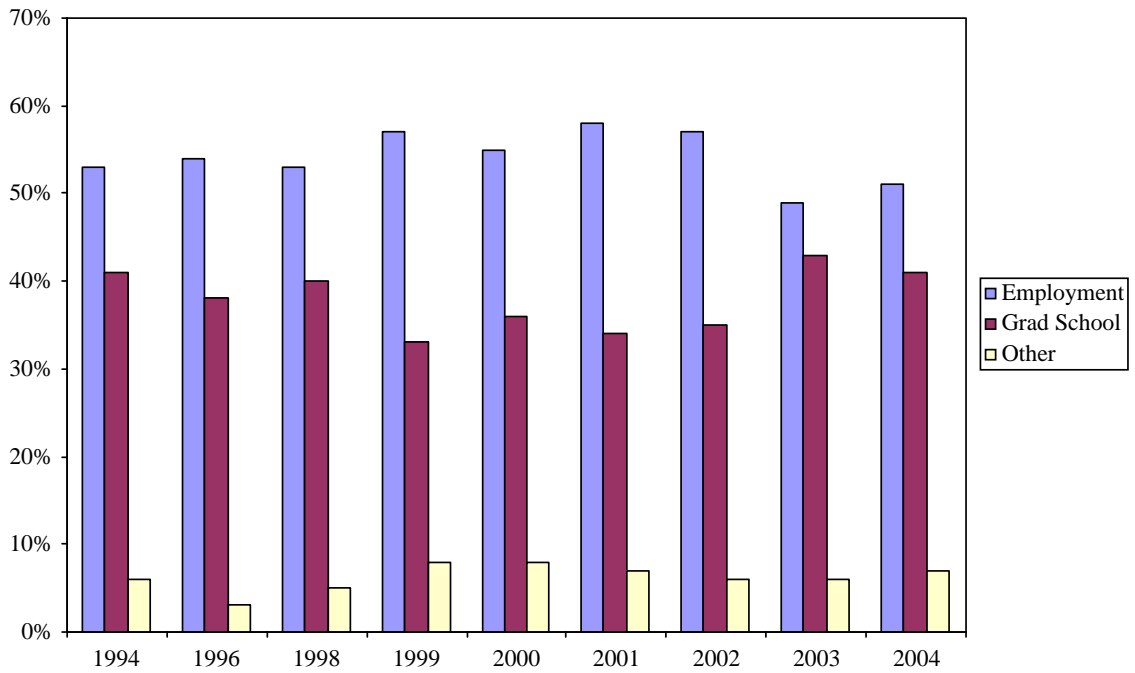
*National salary averages taken from the Spring 2004 Salary Survey compiled by the National Association of Colleges and Employers (NACE)

Appendix II: HISTORICAL PERSPECTIVE

Graduate School Distribution



BA/BS Plans



**Appendix III:
STUDENT SERVICES USAGE**
(Data Gathered May 2004)

Student Service	BA/BS	MA/MS/ Ph.D.	Total	Percentage of Total BA/BS (589)	Percentage Total MA/MS/Ph.D. (243)
Academic Advising	304	N/A	304	51.6%	N/A
Campus Ministries	108	9	117	18.3%	3.7%
Career Services Center	324	100	424	55%	41.2%
Counseling Center	124	47	171	21%	19%
Health Education	57	15	72	9.7%	6.2%
International Services	65	64	129	11%	26.3%
MOB	42	N/A	42	7.1%	N/A
Multicultural Affairs	83	8	91	14.1%	3.3%
Community Involvement Center	154	5	159	26.1%	2.1%
Student Activities	299	55	354	50.1%	22.6%
Student Center	452	163	615	76.7%	67.1%
Student Health Services	379	158	537	64.3%	65%
Study Abroad	207	13	220	35%	5.3%
Vice President of Student Affairs	230	5	235	39%	2.1%
Vice Provost for Grad. Students	N/A	57	57	N/A	23.5%

Appendix IV:
DEMOGRAPHICS OF SURVEY
(Data Gathered May 2004)

Total Number Surveyed:	832
Number of Bachelor's Degree Recipients:	589
Number of Master's Degree Recipients:	116
Number of Doctorate Recipients:	126
Unknown (graduate student):	1

Total Number Graduating:	943
Number of Bachelor's Degree Recipients:	642
Number of Master's Degree Recipients:	175
Number of Doctorate Recipients:	126

BA/BS Gender Distribution	589
Male:	256
Female:	270
Unspecified:	63

MA/MS/Ph.D. Gender Distribution	243
Male:	125
Female:	92
Unspecified:	26

BA/BS Ethnicity Distribution		
African-American/Black	27	5%
American Indian or Alaskan Native	1	0.2%
Asian-American/Pacific Islander	80	14%
Caucasian/White	334	57%
Mexican-American	43	7%
Multi-racial	28	5%
Puerto Rican, Cuban, or other Hispanic origin	9	1%
International Student	11	2%
Other	1	0.2%
No Response	55	9%

MA/MS/Ph.D. Ethnicity Distribution		
African-American/Black	4	2%
American Indian or Alaskan Native	0	0%
Asian-American/Pacific Islander	17	7%
Caucasian/White	136	56%
Mexican-American	7	3%
Multi-racial	8	3.3%
Puerto Rican, Cuban, or other Hispanic origin	5	2%
International Student	47	19%
Other	7	3%
No Response	12	5%

Appendix V:
DEMOGRAPHIC BREAKDOWN OF BA/BS PLANS
(Data Gathered May 2004)

By Ethnicity	Employment	Graduate School	Other	No Response	Number of Respondents	% of Total Surveyed
African-American/Black	70%	26%	--	4%	27	5%
American Indian or Alaskan Native	100%	--	--	--	1	0.2%
Asian-American/Pacific Islander	37%	59%	4%	--	80	14%
Caucasian/White	51%	39%	9%	1%	334	57%
Mexican-American	65%	30%	5%	--	43	7%
Multi-Racial	50%	46%	4%	--	28	5%
Puerto Rican, Cuban, or other Hispanic	44%	56%	--	--	9	1%
International Student	64%	18%	18%	--	11	2%
Other	100%	--	--	--	1	0.2%
No Response	44%	42%	12%	3%	55	9%
Total					589	100%

By Gender	Employment	Graduate School	Other	No Response	Number of Respondents	% of Total Surveyed
Male	52%	39%	8%	1%	256	49%
Female	50%	42%	7%	1%	270	51%
Total					526	100%